

Kadena Air Base Passenger Terminal



Advice
to
Passengers





QUICK LINKS



Kadena Passenger Terminal Webpage



72 Hour Schedule



DSN: 315-632-6487

315-634-3784

Comm: 011-81-98-962-6487



73ams.space-available@us.af.mil

[73AMS.TROP.PassengerTerminal](mailto:73AMS.TROP.PassengerTerminal@us.af.mil)

[@us.af.mil](mailto:73AMS.TROP.PassengerTerminal@us.af.mil)



PATRIOT EXPRESS EARLY-BIRD CHECK-IN TRAVELERS IN PCS/TDY STATUS



Early-Bird Check-In for the Patriot Express flights will begin 24 hours PRIOR to Estimated Time Departure (ETD). It is HIGHLY recommended that all passenger's check-in early. Early-Bird check-in is only authorized for Space Required (Space-R) personnel.

PCS/TDY personnel MUST have:

1. 2x copies of Military Orders
2. Military Identification
3. Passports or ID cards for dependents of age 14+
4. All checked and carry-on baggage
5. All pets (inside kennel/carrier) and travel documentation

Pets, carriers and carry-on items will not be held overnight



JAPAN IMMIGRATION

Departing Kadena



- SOFA Status Personnel will process immigration at the AMC Kadena Passenger Terminal
- Non-SOFA Status (to include Retiree's and Japanese Passport Holders) will process immigration through the Immigration Bureau of Japan
- Non-SOFA Status process for boarding the Patriot Express:
 - Request departure slip from AMC Kadena Passenger Terminal
 - Go to the off-base Regional Immigration Bureau at the Okinawa Defense Bureau (5-10 min. North of Gate 1/Ground Floor Office)
 - Request departure passport stamp to leave Japan
 - Return to the AMC Kadena Passenger Terminal





JAPAN IMMIGRATION

Arriving to Kadena



- SOFA Status Passengers will process immigration at the AMC Kadena Passenger Terminal
- NON-SOFA Status Passengers:
 - Passengers will be escorted off-base by 18 SFS/Customs to the Regional Immigration Bureau via bus
 - Passengers **MUST** bring all belongings with them; there are no storage options inside the Passenger Terminal for security reasons
 - A Japanese Immigrations agent will stamp your passport
 - All passengers will return to Kadena upon completion and will be dropped off at the Passenger Terminal



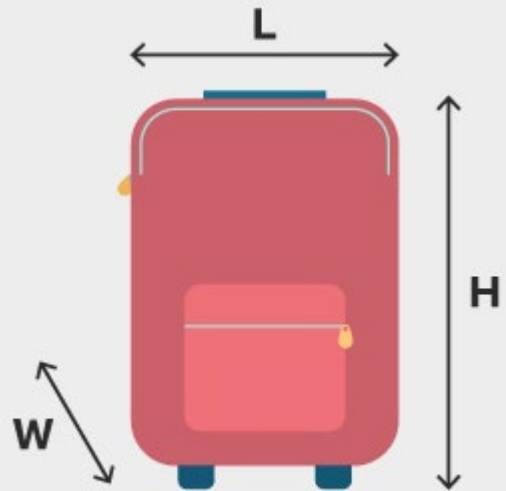


BAGGAGE LIMITATIONS

CHECKED BAGGAGE LIMITATIONS

Passengers are entitled to two pieces of checked baggage not to exceed 70 lbs. each for a total of 140 lbs. Neither will exceed 62 linear inches (length + width + height).

*Exceptions: C-12, C-21, UC-35 30 lbs total baggage weight and C-9 and C-40 2 pieces 40 lbs total baggage weight.



$$L + H + W = 158\text{cm (62in)}$$

1 Bag = 70lbs (31kg)

2x Bags Allowed per Passenger

1x Carry-On and 1x personal
item per person



CARRY-ON BAGGAGE LIMITATIONS

FAA regulations require that carry-on baggage be limited to items that can be conveniently stowed under your seat or in an approved storage compartment. Items which Cannot meet this requirement must be checked as regular baggage.

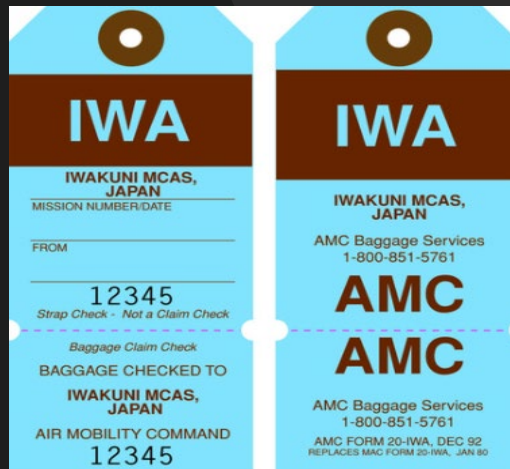


CHECKED BAGGAGE



IDENTIFICATION OF CHECKED BAGGAGE

Government regulations require that no passenger's baggage be checked for transportation unless the passenger's name is on the outside of such baggage



SMART LUGGAGE

- Smart bags or luggage that contain lithium battery power banks pose a risk when placed in the cargo hold of an aircraft.
- The battery must be removed prior to processing as checked luggage and must be placed in carry-on bag.
- Please be advised that checked bags or luggage with non-removable lithium batteries will not be accepted.



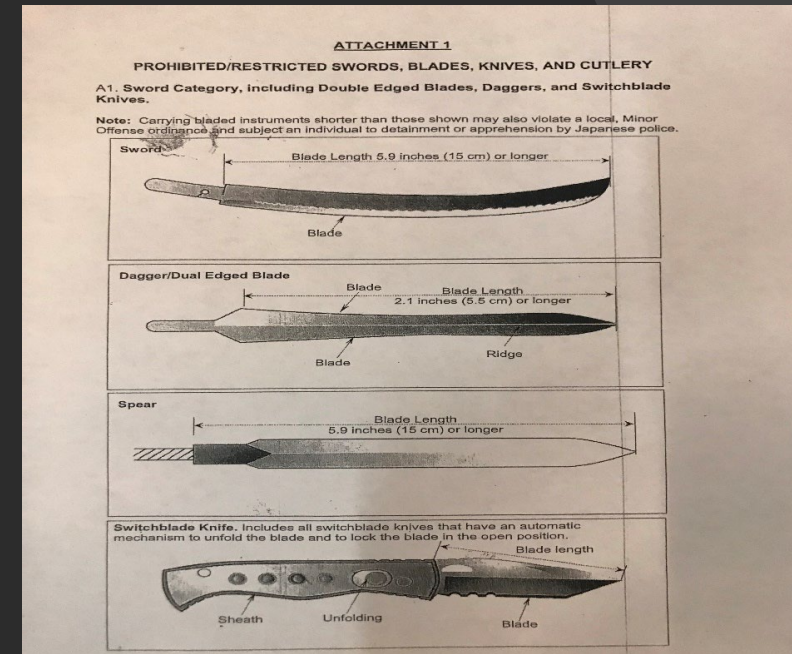
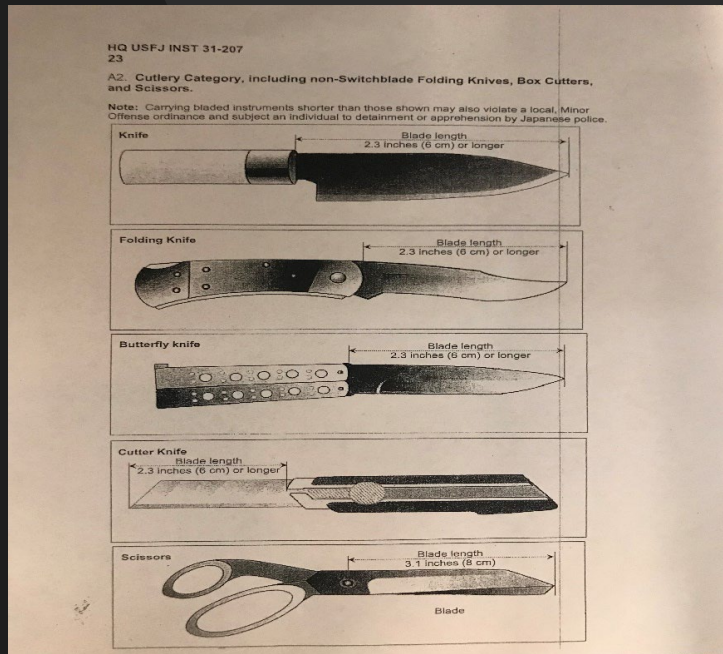


KNIVES IN CHECKED BAGGAGE



Knives of any sort (to include decorative style/going-away gifts) must not exceed specific lengths based on type. See images below for reference. Checked baggage which contains knives that do exceed respective lengths will be refused, and knives are subject to confiscation by 18 SFS/Customs. Transport of knives in carry-on luggage is PROHIBITED.

REF: HQ USFJ INST 31-207





CARRY-ONS

LIQUIDS THROUGH SECURITY

3-1-1 for Your Carry-Ons Play Your Part →

<p>3 3 ounces* or less size containers of liquid or gel. *More than 3 ounces permitted in checked baggage.</p> <p>Container size is a security measure.</p> 	<p>1 1 quart-size, clear plastic, zip-top bag holding 3 ounces or less containers.</p> <p>Bag limits total volume per person.</p> 	<p>1 1 bag per traveler placed in the security bin.</p> <p>Isolating liquids speeds screening.</p> 
--	--	--



Transportation Security Administration

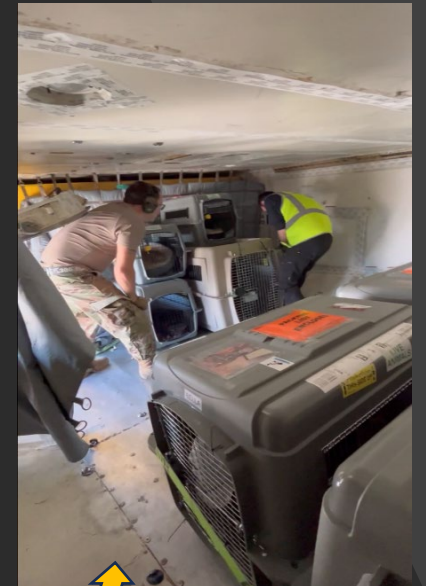
www.tsa.gov



PATRIOT EXPRESS PET HANDLING PROCESS



For all passengers traveling with pets: you will be allowed to remain with your pet until all passengers have processed through the sterile gating area. Your pets will remain in an air-conditioned room under close watch by a member of our team until all passengers have been loaded. We will then transport your pets via air-conditioned van to the aircraft shortly before departure. The aircraft compartment will be maintained at a cool temperature to ensure the safe loading and eventual transport of your pet to your next destination.





NOTICE TO PASSENGERS



TRANSPORTATION OF FIREARMS AND INSPECTION OF CHECKED BAGGAGE

- FAA regulations require that firearms in checked baggage must be declared, unloaded and in a locked container. Passengers failing to declare firearms or transporting loaded firearms are subject to civil penalty of \$25,000.
- Passengers refusing to present identification and/or permit checked baggage inspection may not be transported.

CARRIAGE OF HAZARDOUS MATERIALS

- Federal law forbids the carriage of hazardous materials aboard aircraft in checked or handcarried baggage. A violation can result in penalties of up to \$25,000- and five-years imprisonment.
- Hazardous materials include explosives, compressed gases, flammable liquids and solids, oxidizers, poisons, corrosives and radioactive materials.
- There are special expectations for small quantities of liquids, gels, or aerosols, three ounces per container, packed in a one quart zip-closure bag. E-cigarette smoking materials are also permitted in hand carried baggage.

TRANSPORTATION OF NARCOTICS

- Federal law prohibits the transfer, use or possession of narcotics including marijuana, aboard aircraft.

PENALTIES

- Persons making false statements or having weapons/explosives on or about their persons or accessible property when entering a sterile area or while onboard an aircraft, may be subject to prosecutions for violations of Federal Criminal Statutes and may be subject to civil penalties of \$25,000 per day and with a \$500,000 maximum for each violation of Federal Aviation Regulations

PASSENGER SCREENING

- Inspection of all persons and hand-carried articles entering a security checkpoint is **required**.
- Inspection may be refused. Persons refusing inspection may not proceed past the initial screening check point.
- Knives on your person are strictly prohibited and will be confiscated.



LET US KNOW HOW WE'RE DOING

ICE

INTERACTIVE CUSTOMER EVALUATION

